



"Georgia O'Keeffe" by Alfred Stieglitz, 1922 - Gift of Georgia O'Keeffe, through the generosity of The Georgia O'Keeffe Foundation and Jennifer and Joseph Duke, 1997

Georgia O'Keeffe

Georgia O'Keeffe

About the artist:

Georgia O'Keeffe was an American Modernist Painter. She was born on November 15, 1887, and died on March 6, 1986; having lived for 98 years. She decided to become an artist at the young age of 10.

In her art, she liked the idea of expressing herself through using line, color and shading in a harmonious way. She believed that "colors and shapes make a more definite statement than words." And therefore created mostly modern abstract paintings. Some of her most famous paintings included close-ups of flowers. So close-up that the flowers became an abstract expression of color and shape.

Many of her paintings were produced by looking closely and imaginatively at the world, and she painted many scenes and locations over and over again, not afraid of making mistakes, rather she learned from them. She told art historian Katharine Kuh, "I have a single-track mind. I work on an idea for a long time. Success doesn't come with painting one picture. It results from taking a certain definite line of action and staying with it."

She lived for a long time, and her art career was long and accomplished: she made more than a thousand pieces of art. At the end of her life she lived in the desert and painted with the help of an assistant even after she began to lose her sight.



"Music, Pink and Blue No. 2", 1918



"Black Mesa Landscape New Mexico, Out Back of Marie's II", 1930



"Oriental Poppies", 1928

Instructions

Step 1:

Introduce students to O'Keeffe's work through video(s), PDF sheets, or slideshow.



Step 2:

Talk about analogous colors - colors that sit next to each other on the color wheel - and how they are applied to the close-up flowers O'Keeffe painted.



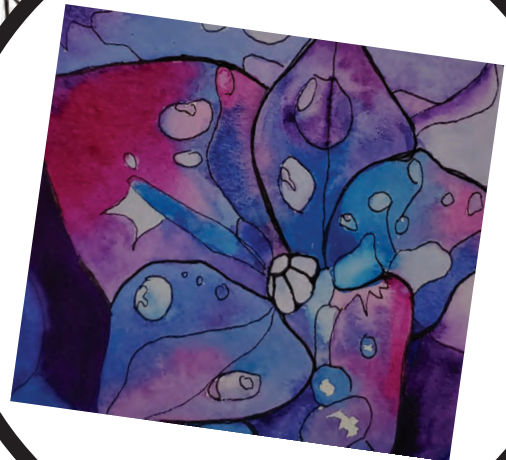
Step 3:

Have students fill in coloring sheets using analogous colors and color blends as a guide for students to create their own artwork.



Step 4:

Create a large final close-up of a flower and fill with paint or oil pastel.



More Resources

Videos to share:

3 Minutes: Show students this short biography of O'Keeffe

<https://www.biography.com/video/georgia-okeeffe-mini-biography-2168460595>



4 minutes: Georgia O'Keeffe: A Brief History by Watch and Learn

<https://youtu.be/C3iKpM0H6Ek>



NAME: _____

Georgia O'Keeffe used organic lines (lines found in nature) and analogous colors in her artwork. Analogous colors sit next to each other on the color wheel and look great together. Use the color and color blends below to create your own O'Keeffe style artwork!



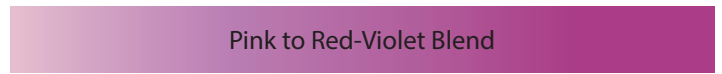
Blue-Green



Light-Green



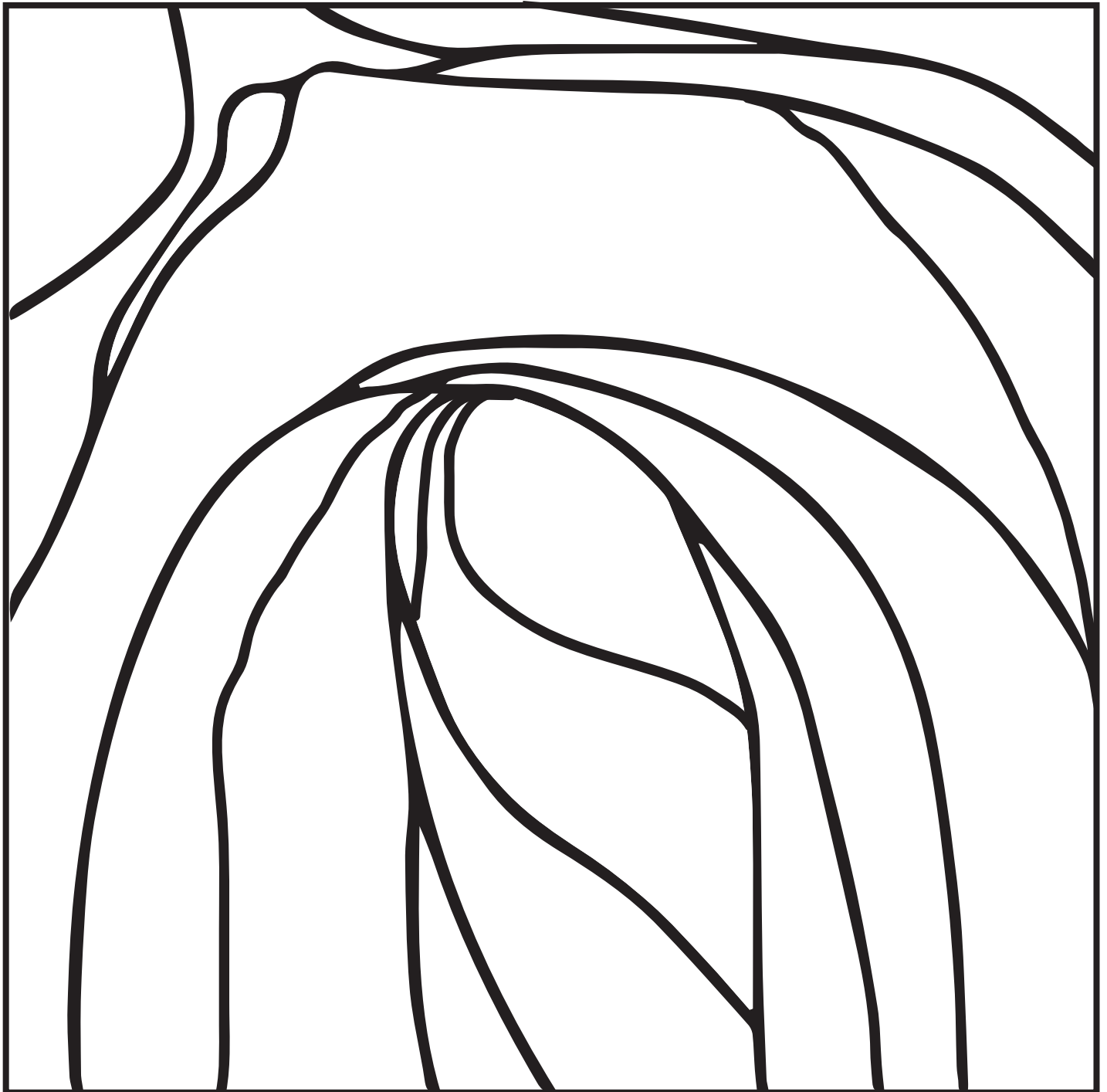
Light-Orange



Pink to Red-Violet Blend



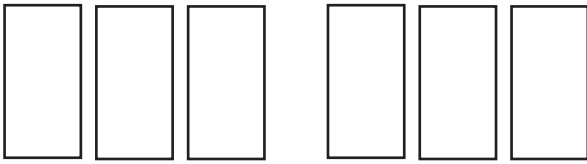
Light-Blue to Medium Blue to Violet Blend



Georgia O'Keeffe

NAME: _____

Choose your own set of analogous colors and blend them to color the close-up drawing of the flower below.



Choose 2 sets of analogous of colors

Use 1 set of analogous colors and fill with this blend.

Use the 2nd set of analogous colors and fill with this blend.



Georgia O'Keeffe

NAME: _____

Choose your own set of analogous colors and blend them to color the close-up drawing of the flower below.

--	--	--	--	--	--

Use 1 set of analogous colors and fill with this blend.

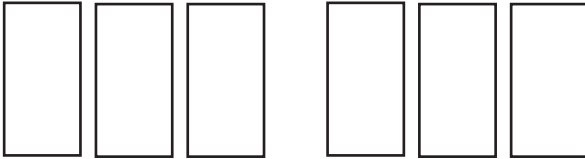
Use the 2nd set of analogous colors and fill with this blend.



Georgia O'Keeffe

NAME: _____

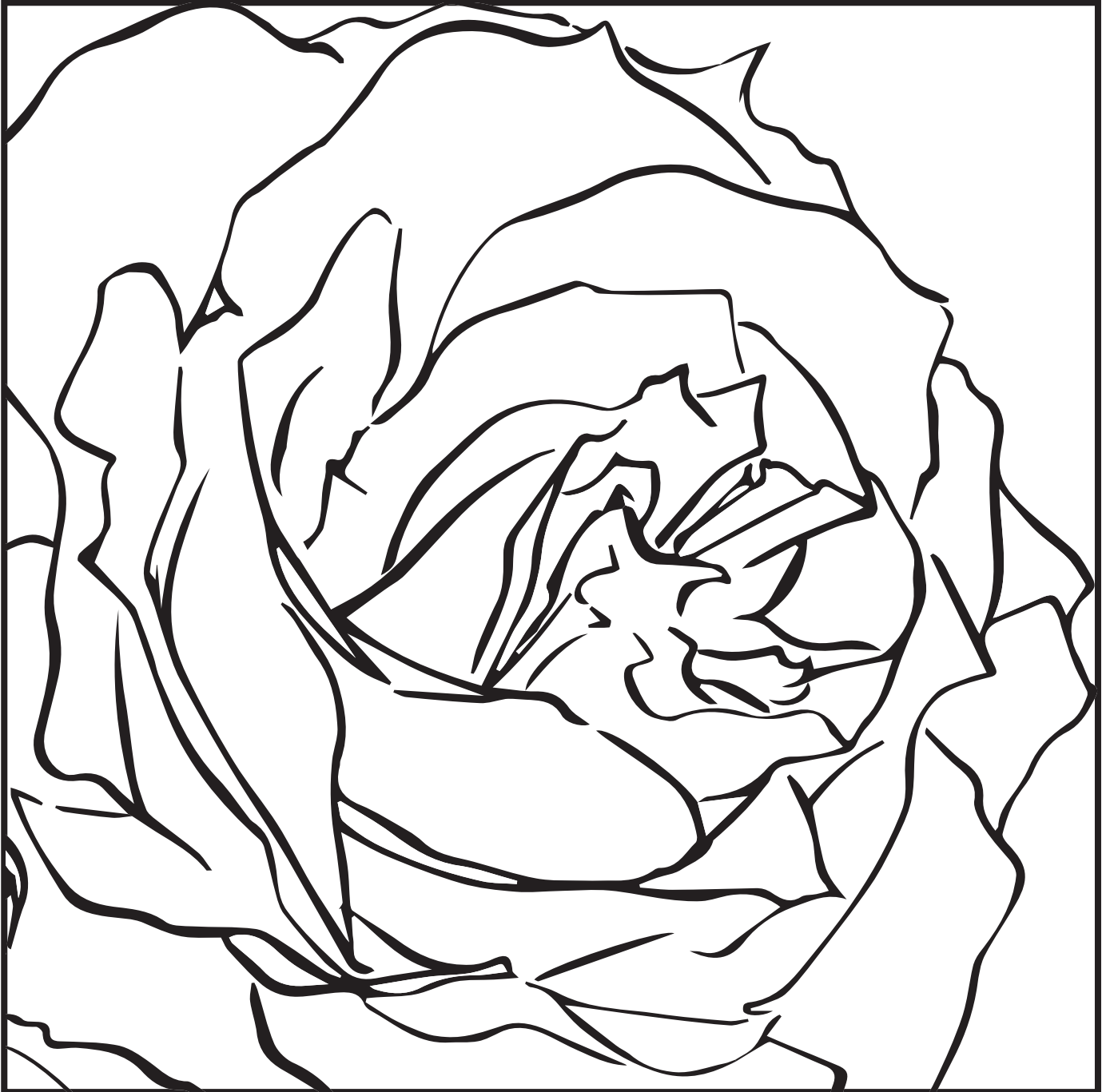
Choose your own set of analogous colors and blend them to color the close-up drawing of the flower below.



Choose 2 sets of analogous of colors

Use 1 set of analogous colors and fill with this blend.

Use the 2nd set of analogous colors and fill with this blend.



Georgia O'Keeffe

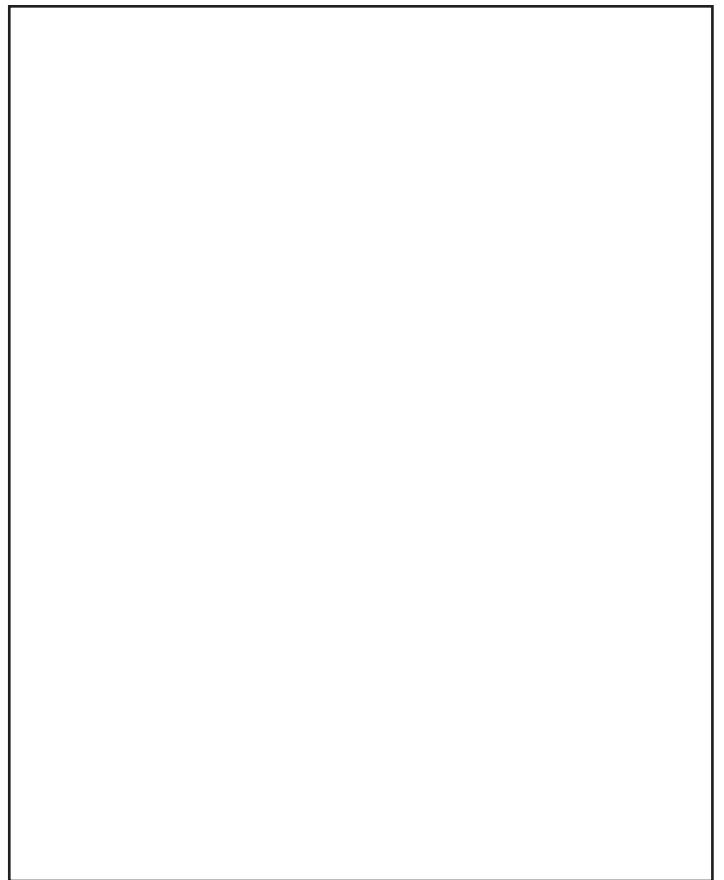
NAME: _____

Georgia O'Keeffe simplified close-up flowers and made them into modern abstract art. Draw your own abstract version of the flower on the left then fill with your analogous colors and blend them to create your own artwork.

--	--	--	--	--	--

Use 1 set of analogous colors and fill with this blend.

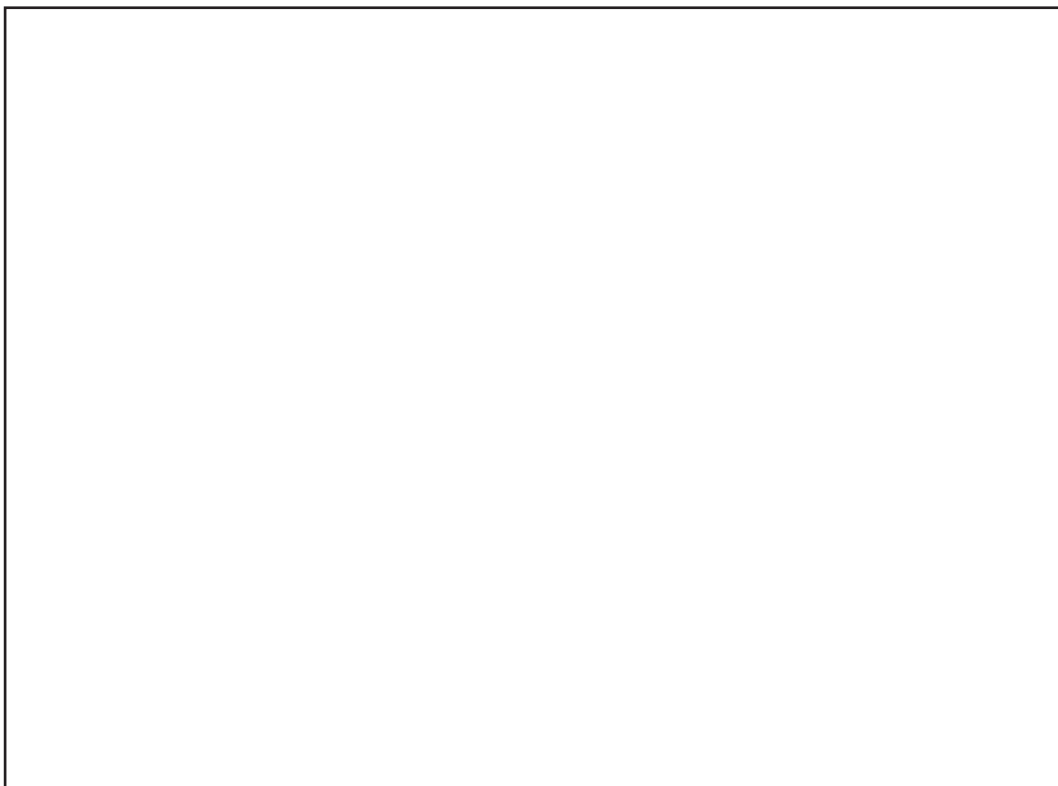
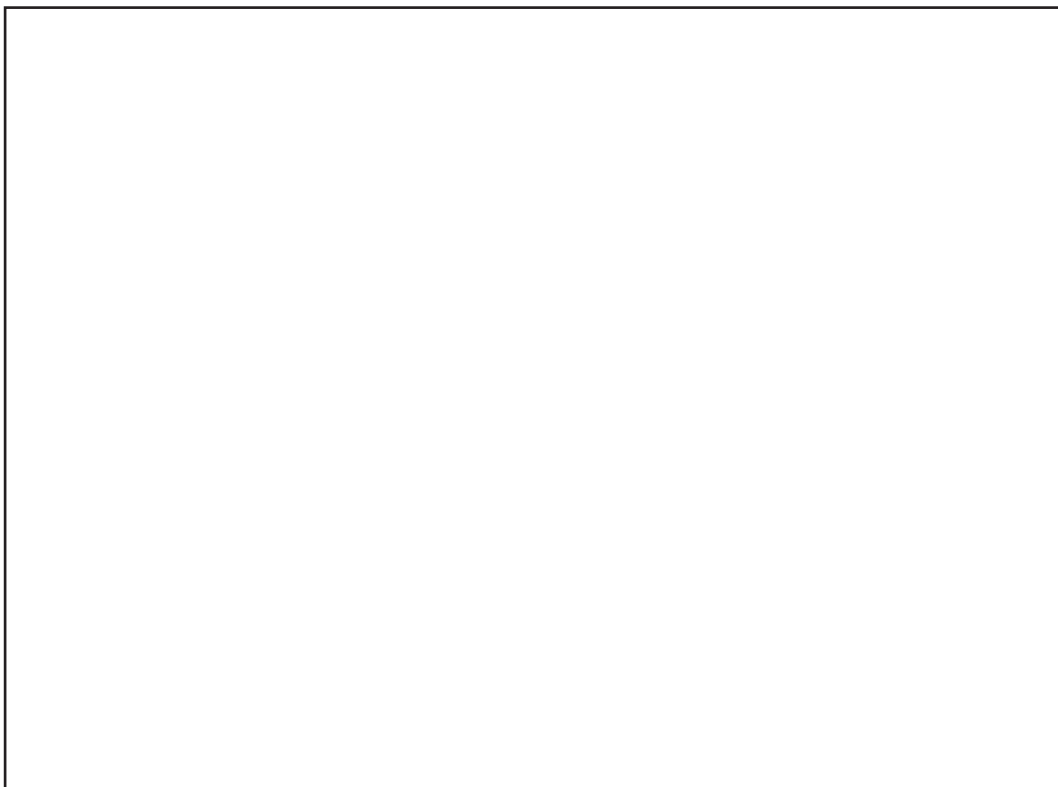
Use the 2nd set of analogous colors and fill with this blend.



Georgia O'Keeffe

NAME: _____

Find a close-up photo of a flower or even better, take your own close-up photo of a flower. Print out your reference, cut it to the size of the top box and tape it into your book. Next outline the contours of your flower directly onto the printed reference. Then re-draw the contour lines into the box on the bottom and color.



Georgia O'Keeffe



"From the Lake No. 1", 1924

Georgia O'Keeffe

NAME: _____

Take a look at O'Keeffe's painting on the previous worksheet and answer the questions below:

What colors do you see? Are they warm/cool, complementary/analogous? How do they make you feel?

What types of lines and shapes do you see? (organic/geometric) What emotions do you think they convey?

Choose a principle of art (Unity, Repetition, Rhythm, Variety, Balance, Proportion, Emphasis, Movement), that you see in the painting and describe where it is located and how it is used in the painting.

Overall what kind of event do you think the painting is trying to convey?

NAME: _____

The Process

Find reference of a close up flower, or even better take a close up photo of a flower with your phone. Print it out and crop the area that you want to paint. Next trace over the lines of the flower with Sharpie. This will become an abstract painting so pick and choose the areas you want in your artwork. O'Keeffe always painted off the edge of her canvas and you will too, so make sure you trace not just the flower but everything in the background as well.



NAME: _____

The Process

Look at the color reference of your flower and identify key colors that you see and create a color plan using a scrap piece of watercolor paper and paint. Remember to add water to create lighter versions of your colors. Once that is done begin to paint your own O'Keeffe flower.



Example:

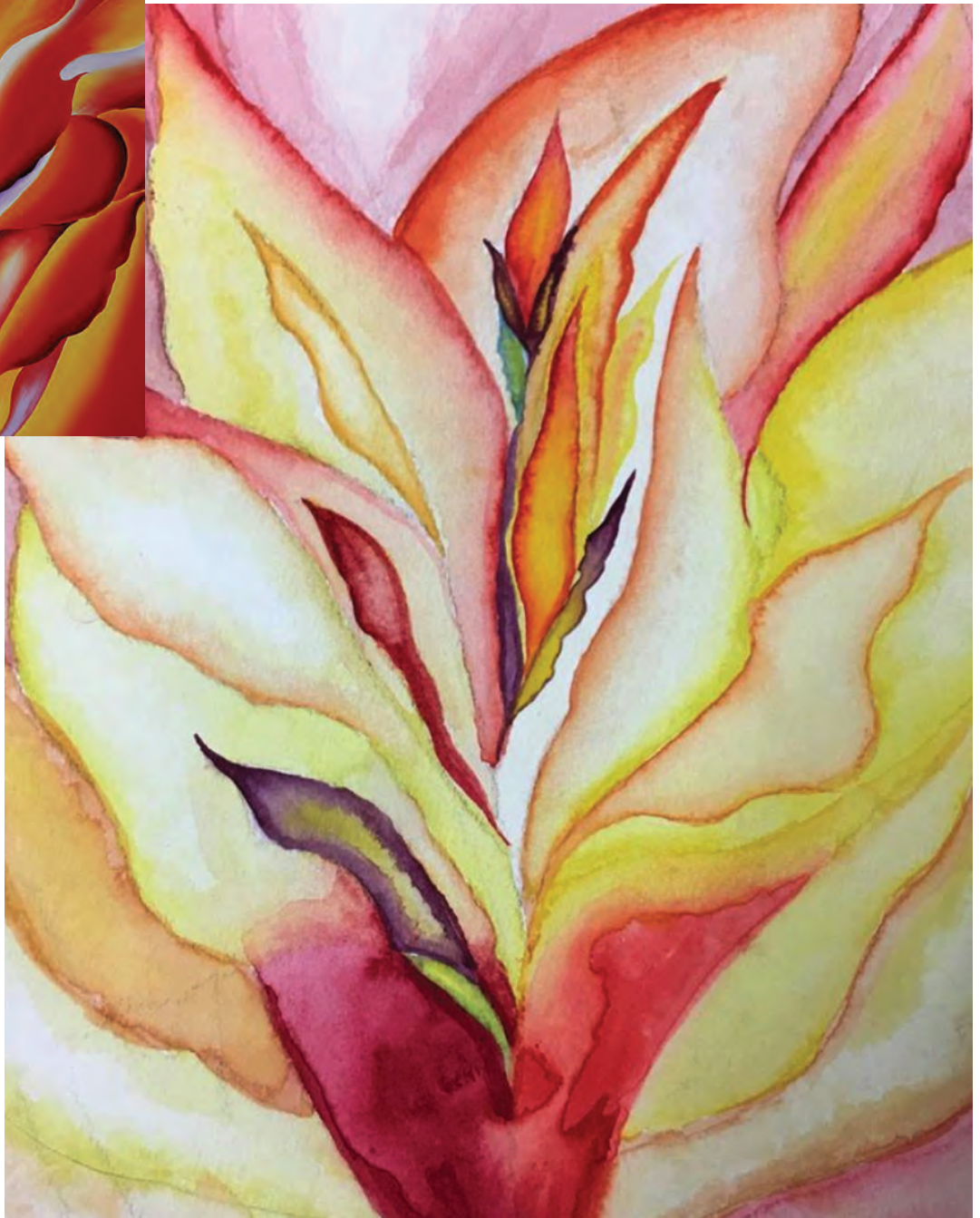
NAME: _____

Extension activity

Choose one of O'Keeffe's paintings and re-create it using watercolor paint. You don't need to try to match the painting exactly, make it your own! No need to trace on this one, just go for it!



Georgia O'Keeffe,
"Red Canna", 1924

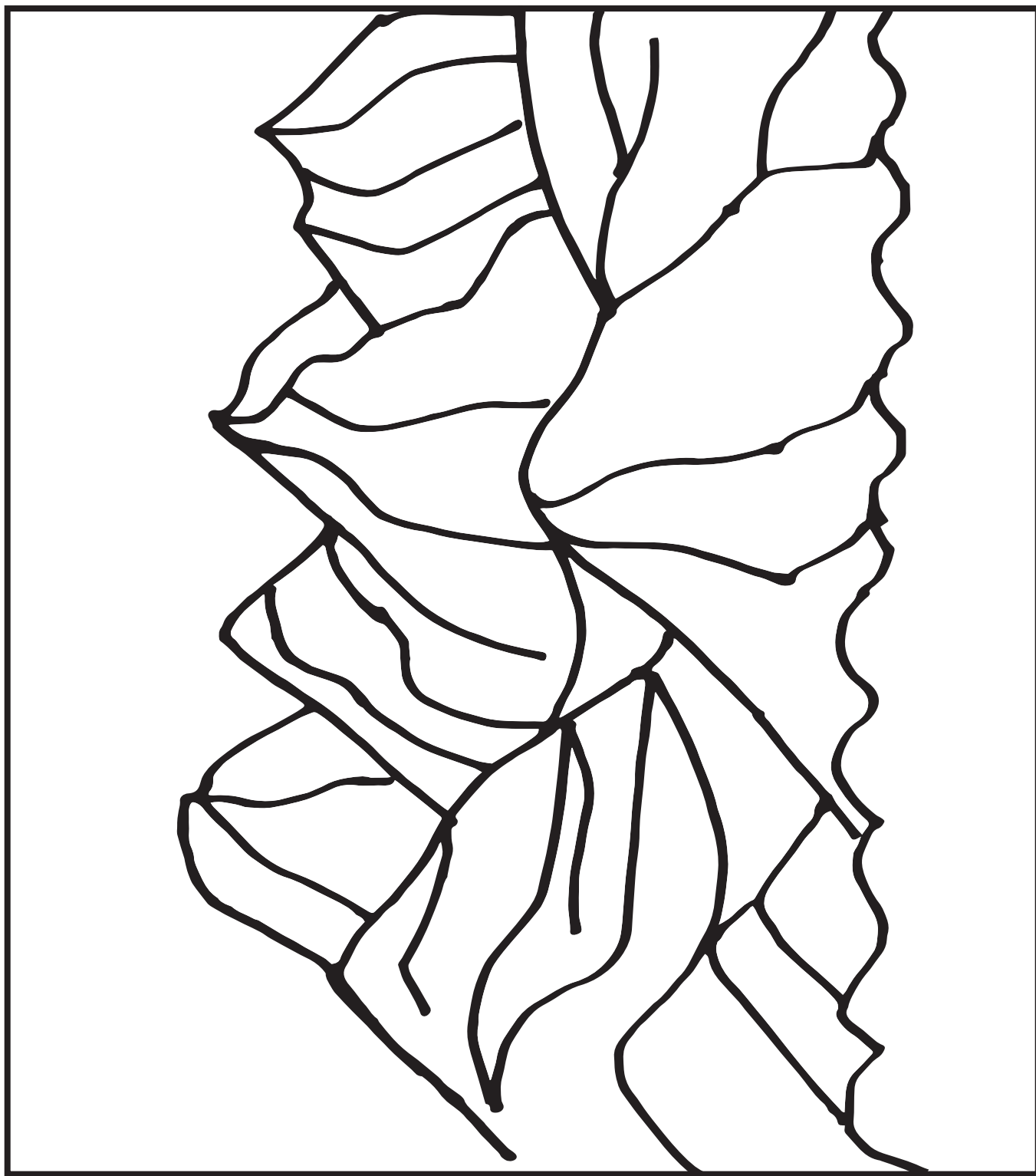


Student Example

NAME: _____

EXTENSION PROJECT

O'Keeffe painted much more than just flowers. She painted cityscapes and landscapes as well, but she always simplified shapes and forms and filled them with beautiful color. Use the drawing based on her Black Mesa New Mexico painting and fill with colors of your choosing.

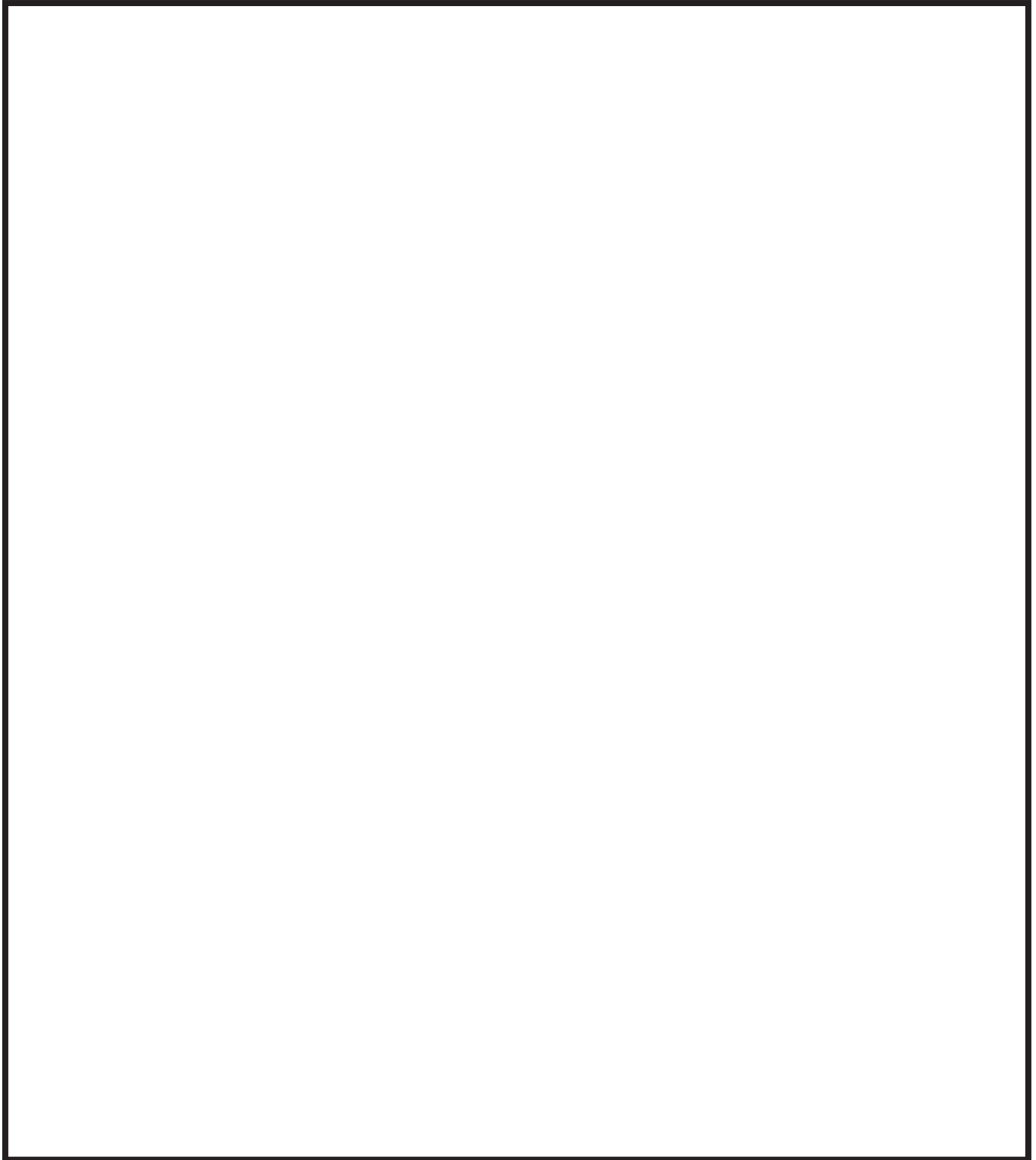


Georgia O'Keeffe

NAME: _____

EXTENSION PROJECT

Find reference or take a photo of a landscape or cityscape. Use that reference and all that you've learned to create your own piece of art inspired by Georgia O'Keeffe.



Georgia O'Keeffe